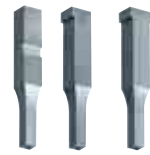


CARBIDE BLOCK PUNCHES

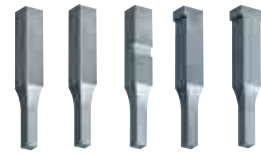
CARBIDE BLOCK PUNCHES



Price Cut



Price Cut



Price Cut

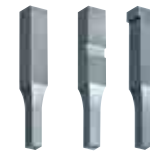
Name	CARBIDE BLOCK PUNCHES	CARBIDE BLOCK PUNCHES WITH AIR HOLE	CARBIDE BLOCK PUNCHES - Free size type -
Catalog No.	ZP□BL ZP□ML ZP□KL ZP□FL ZP□WL	ZJ□BL ZJ□KL ZJ□FL ZJ□WL	FZP□BL FZP□ML FZP□KL FZP□FL FZP□WL
Delivery	(5)	(10)	(10)
Page	459	461	465



Price Cut



Price Cut



Price Cut



Price Cut

New Add.

CARBIDE STRAIGHT PUNCHES	CARBIDE STRAIGHT PUNCHES WITH AIR HOLE	CARBIDE BLOCK PUNCH BLANKS	CARBIDE BLOCK PUNCH BLANKS
ZPC□ ZMC□ ZKC□ ZFC□ ZWC□	ZJC□ ZJK□ ZJC□ ZJWC□	ZPDB ZPDM ZPDK ZPDF ZPDW	ZPB B-ZPB ZPM ZPK B-ZPK ZPF ZPW
(5)	(10)	(5)(8)	(5)(8)
469	471	477	479



Price Cut



CARBIDE BLOCK PUNCH BLANKS WITH AIR HOLE	CARBIDE BLOCK MATERIALS
ZJB ZJK ZJF ZJW	Z
(10)	(1)
481	483

CARBIDE BLOCK PUNCHES LIST

GUIDE

Shank type	□	Standard	Free size type
Carbide normal type		V30(HIP) ZP□BL P.459	FZP□BL P.465
Carbide with air hole		V30(HIP) ZJ□BL P.461	
Carbide with tapping		V30(HIP) ZP□ML P.459	FZP□ML P.465
Carbide with key groove		V30(HIP) ZP□KL P.459	FZP□KL P.465
Carbide with air hole with key groove		V30(HIP) ZJ□KL P.459	
Carbide single flange		V30(HIP) ZP□FL P.459	FZP□FL P.465
Carbide with air hole single flange		V30(HIP) ZJ□FL P.461	
Carbide double flange		V30(HIP) ZP□WL P.459	FZP□WL P.465
Carbide with air hole double flange		V30(HIP) ZJ□WL P.461	
Carbide straight		V30(HIP) ZPC□ P.469	
Carbide with air hole straight		V30(HIP) ZJC□ P.471	
Carbide straight with tapping		V30(HIP) ZMC□ P.469	
Carbide straight with key groove		V30(HIP) ZKC□ P.469	
Carbide with air hole straight with key groove		V30(HIP) ZJK□ P.471	
Carbide straight single flange		V30(HIP) ZFC□ P.469	
Carbide with air hole straight single flange		V30(HIP) ZJFC□ P.471	
Carbide straight double flange		V30(HIP) ZWC□ P.469	
Carbide with air hole straight double flange		V30(HIP) ZJWC□ P.471	

Carbide block punch precision standard

	Accuracy standard	Perpendicularity
Perpendicularity	$a \leq 0.005$	$c \leq 0.005$
Parallelism	$b \leq 0.005$	$d \leq 0.005$